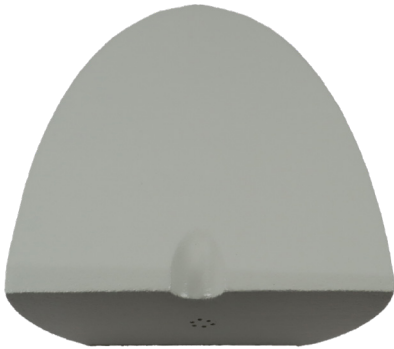


PATIENT

Tilt Wedge

INF-9009



INFAB's Tilt Wedge's unique design allows it to excel in cushioning pressure points on patients. This product can be used in all different imaging procedures thanks to its radiolucency. This product is made of open cell foam, which is soft and supportive, ensuring patient comfort while not compromising on stability and proper positioning. The foam is also coated with ScanCoat, a radiolucent sprayed coating with no seams, allowing you to get a clear image with fewer rescans needed.

*Please note: Not recommended for low KVP techniques as the edges/seams may show.

- A unique, angled positioning wedge to assist in imaging procedures.
- The Tilt Wedge's unique design allows it to be placed on pressure points to give much-needed relief to a patient during imaging.
- The foam is coated with ScanCoat, a sprayed coating that does not have seams and is radiolucent, allowing you to get a clear image with fewer rescans needed.
- Latex Free
- Reusable
- Radiolucent

Model	INF-9009
Description	Tilt Wedge
Modalities	CT Scan
Substrate	Open cell foam
Dimensions	9" H x 6.5" W x 3.38" L
Finish	ScanCoat®
Sterile	N
Latex Free	Y
Single Use	N