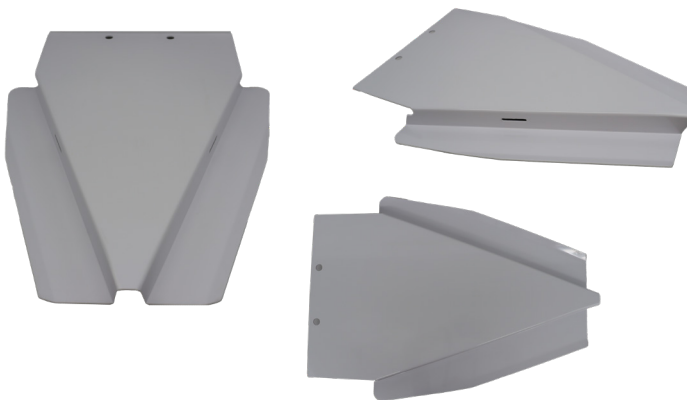


Rest Eazy Armboards

INF-261, INF-262, INF-263, INF-265



INF-265: Fits Canon CAT-880B angio table



INF-261: Fits GE angio tables



INF-262: Fits Siemens and Philips angio tables

INFAB's Rest Eazy Armboards are the perfect addition to your operating room. Our Armboards provide essential arm support for prone patients, ensuring proper patient positioning for radial and brachial access. Designed to be patient weighted, these Armboards slide over the head-end of the table, offering stability and easy of use. Constructed from lightweight and rigid ABS plastic, they are durable, reusable, and latex-free, making them safe for all patients. Available in four different part numbers to fit various Angio tables, these Armboards are a reliable choice for medical professionals.

- White ABS plastic Armboards that provide arm support for prone patients.
- Armboards are patient-weighted and slide over the head-end of the table.
- Armboards properly position the patient for radial and brachial access.
- ABS plastic substrate ensures lightness and rigidity.
- Available in four different part numbers for different Angio tables.
- Latex Free
- Reusable



INF-263: Fits Canon CAT-850B angio table

Model	INF-261: Fits GE angio tables INF-262: Fits Siemens and Philips angio tables INF-263: Fits Canon CAT-850B angio table INF-265: Fits Canon CAT-880B angio table
--------------	---

Description	Rest Eazy Armboards
Modalities	Cath Lab, Hybrid OR, Interventional, Interventional X-Ray, Nuclear Medicine, Operating Room, Vascular
Substrate	Polycarbonate
Sterile	N
Latex Free	Y
Single Use	N

