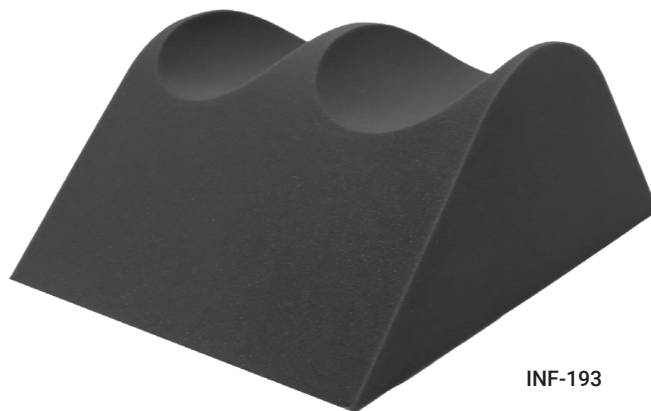


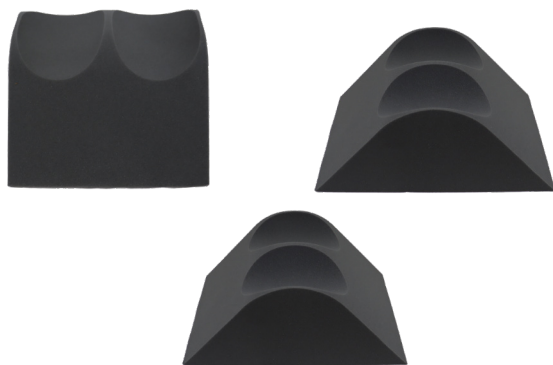


Leg Rest with Knee Cutouts

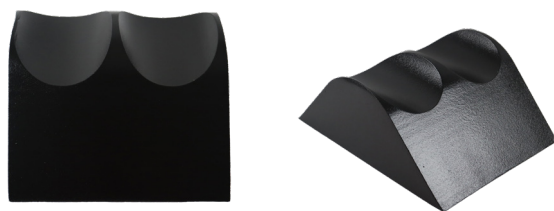
INF-193, INF-193-SCB



INF-193



INF-193



INF-193-SCB with Scancoat®

INFAB's Leg Rest with Knee Cutouts provides leg and knee support during medical procedures while maintaining hip flexion. This product can help to relieve back pain during medical procedures. This product is available with ScanCoat, a radiolucent sprayed coating, and ensures imaging compatibility, cleanability, and contamination control. This product is also available in three different sizes to maximize patient compatibility.

*Please note: Covered items (-SCB) are not recommended for low KVP techniques as the edges/seams may show..

- Provides leg and knee support while maintaining hip flexion.
- Helps relieve lower back stress and pain during medical procedures.
- Available with ScanCoat, a radiolucent sprayed coating, ensuring imaging compatibility, cleanability, and contamination control.
- Open cell foam substrate is soft, promoting both comfort and support for the patient.
- Available in three different sizes to maximize patient compatibility.
- Latex Free
- Reusable
- Radiolucent

Model	INF-193 INF-193-SCB with Scancoat®
Description	Leg Rest with Knee Cutouts
Modalities	Cath Lab, Hybrid OR, Interventional, Interventional X-Ray, Operating Room, Vascular
Dimensions	7" H x 13" W x 17.5" L
Substrate	Open cell foam
Sterile	N
Latex Free	Y
Single Use	N

