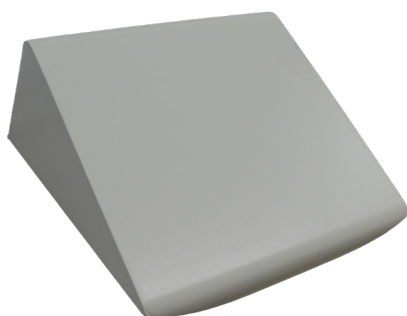
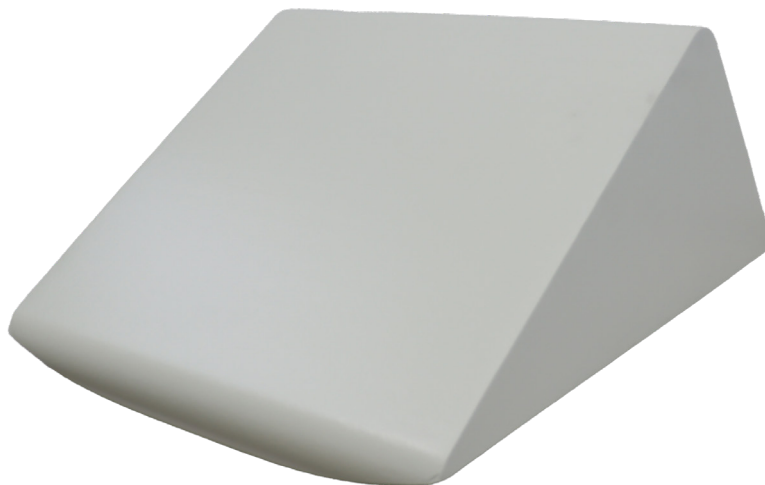




PATIENT

Knee Wedge

INF-9017



INFAB's Knee Wedge has many use cases. This product can be used to provide support for patients' knees in many different situations. From CT scans to surgery, this product can make the experience more comfortable for the patient and more convenient for the provider. This product is made of closed cell foam, which is rigid and durable, ensuring proper positioning and support. The foam is also coated with ScanCoat, a radiolucent sprayed coating with no seams, allowing you to get a clear image with fewer rescans needed.

*Please note: Not recommended for low KVP techniques as the edges/seams may show.

- Coated foam wedge with many use cases.
- Made of closed cell foam, this wedge provides rigid support for patients during procedures.
- The foam is coated with ScanCoat, a sprayed coating that does not have seams and is radiolucent, allowing you to get a clear image with fewer rescans needed.
- Latex Free
- Reusable
- Radiolucent

Model	INF-9017
Description	The Knee Wedge
Modalities	CT Scan, General Positioning, MRI, Operating Room
Substrate	Open cell foam
Dimensions	10.7" x 21.88" x 18.33"
Finish	ScanCoat®
Sterile	N
Latex Free	Y
Single Use	N



REV002

1040 Avenida Acaso
Camarillo, CA 93012, USA

tel: 805.987.5255
fax: 805.482.8424

info@infabcorp.com
www.infabcorp.com

