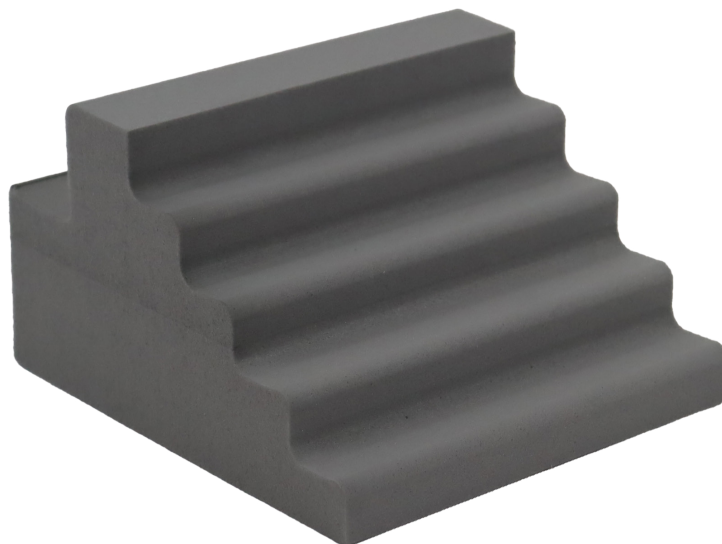


PATIENT

# Finger Block - Oblique

## INF-121



The Oblique Finger Block ensures precise hand positioning, enabling quick image capture and reducing the number of scans needed for proper positioning.

- Allows for right or left oblique hand imaging
- Open Cell Foam – Standard, uncovered foam. Charcoal-colored, open cell foam. The foam is also radiolucent, fire retardant, economical, and useful in many general positioning applications.
- Latex Free and MRI-safe

<b>Model</b>	INF-121
<b>Description</b>	Finger Block - Oblique
<b>Modalities</b>	CT Scan, General Positioning, MRI, Nuclear Medicine, X-Ray
<b>Substrate</b>	Open cell foam
<b>Dimensions</b>	n/a
<b>Sterile</b>	N
<b>Latex Free</b>	Y
<b>Single Use</b>	N



REV002

1040 Avenida Acaso  
Camarillo, CA 93012, USA

tel: 805.987.5255  
fax: 805.482.8424

info@infabcorp.com  
www.infabcorp.com

**INFAB**