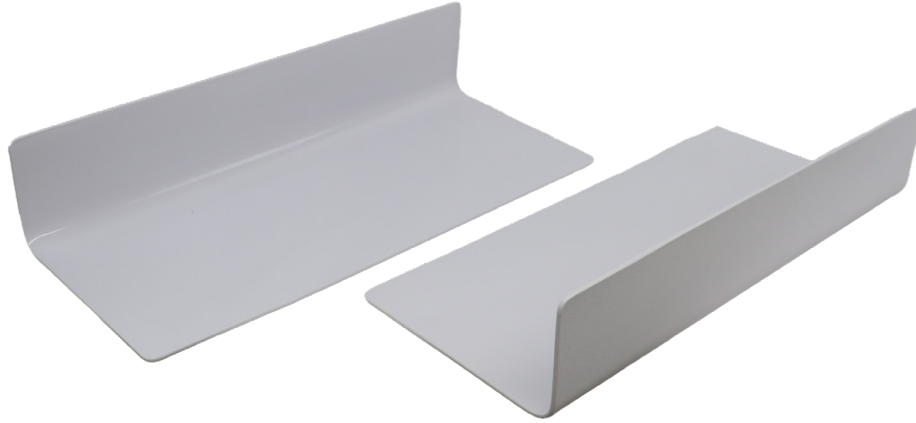


# Arm Support

## INF-9406



The INFAB Arm Support is designed for use with Infinix tables, providing patient-weighted arm support. It securely slides under the table pad, held in place by the patient's weight, ensuring optimal arm positioning. The support offers quick and easy setup and teardown, is easily cleaned, and is reusable. Additionally, it is radiolucent, ensuring it does not interfere with imaging procedures, making it a practical and reliable addition to any medical setting.

- Patient weighted arm support for Infinix tables.
- Support slides under the table pad to be held in place by the patient's weight while positioning their arms.
- Quick and easy setup and teardown
- Easily cleaned
- Reusable
- Radiolucent

<b>Model</b>	INF-9406
<b>Description</b>	Arm Support
<b>Modalities</b>	Cath Lab, Hybrid OR, Interventional, Interventional X-Ray, Operating Room, Vascular
<b>Dimensions</b>	5.25" H x 10.5" W x 23.75" L
<b>Substrate</b>	Plastic
<b>Sterile</b>	N
<b>Latex Free</b>	Y
<b>Single Use</b>	N

